

November 9, 2016

Mr. Mike Vogel
Interim Director of Facilities and Construction Management
South Washington County Schools
7362 East Douglas Point Road S
Cottage Grove, MN 55016
P 651-425-6274
E mvogel@sowashco.org



**RE: Cottage Grove Elementary
Lead-in-Water Testing
IEA Project #201610819**

Dear Mr. Vogel,

At the request of South Washington County Schools, IEA collected a total of 92 samples of drinking water, 87 on September 21, 2016 and five (5) on November 3, 2016, for lead analyses from the Cottage Grove Elementary building.

The purpose of the site sampling was to document lead levels in the sampled locations and compare them to the EPA action level of 20 parts per billion (ppb).

INTRODUCTION

The Environmental Protection Agency (EPA) established the Lead Contamination Control Act (LCCA) of 1988 to identify and reduce lead in drinking water. Both the EPA and the Minnesota Department of Health (MDH) recommend testing of potable water sources (water used for consumption) every five years for the presence of lead. Lead is a metal that usually enters drinking water through the distribution system, including pipes, solders, faucets, and valves. Lead levels in water may increase when the water is allowed to sit undisturbed in the system, such as in science, biology, or art areas. Exposure to lead is a significant health concern, especially to infants and young children whose growing bodies absorb lead more readily than adult bodies do. Lead exposure can cause delays in physical and/or mental development in children and damage to the brain, kidneys, nervous system, and red blood cells. The EPA and MDH recommend that action be taken at a specific fixture when the lead concentration exceeds the EPA's action level for schools of 20 parts per billion (ppb).

METHODOLOGY

IEA collected 92 first-draw (unless otherwise noted) samples of approximately 500 milliliters (ml). "First draw" means the samples are collected before the fixture is used or flushed during the day. The first-draw sample results reflect a worst case scenario, i.e., the highest lead level that would be consumed by building occupants. Current protocol calls for flushing locations 8-18 hours prior to sampling.

Site map with sample locations are included in Appendix A. Water samples were analyzed by Minnesota Valley Testing Laboratories (MVTLL) in New Ulm, Minnesota, which uses EPA approved analytical methods and quality control/assurance procedures. Samples were analyzed using the ICP/MS EPA Method 200.8.

INSTITUTE FOR ENVIRONMENTAL ASSESSMENT, INC.
www.ieasafety.com

BROOKLYN PARK
9201 West Broadway, #600
Brooklyn Park, MN 55445
763-315-7900
FAX 763-315-7920
800-233-9513

MANKATO
610 North Riverfront Drive
Mankato, MN 56001
507-345-8818
FAX 507-345-5301
800-233-9513

ROCHESTER
210 Woodlake Drive SE
Rochester, MN 55904
507-281-6664
FAX 507-281-6695
800-233-9513

BRAINERD
13432 Elmwood Drive, Ste. #5
Baxter, MN 56425
218-454-0703
FAX 218-454-0703
800-233-9513

MARSHALL
1420 East College Drive
Marshall, MN 56258
507-476-3599
FAX 507-537-6985
800-233-9513

VIRGINIA
5525 Emerald Avenue
Mountain Iron, MN 55768
218-410-9521
FAX 763-315-7920
800-233-9513

RESULTS & DISCUSSION

The lead-in-water sampling results ranged from below the level of detection (<0.05 ppb) to 95.0 ppb. There are two (2) sample results greater than 20 ppb. See *Table 1: Water Testing Results Exceeding 20 ppb*. The laboratory report is provided in Appendix B. Laboratory results are reported in micrograms per liter (µg/L) which is equivalent to parts per billion (ppb).

Table 1: Water Testing Results Exceeding 20 ppb – September 21, 2016

Sample Number	Building	Sampling Location	Fixture Type	Lead Results (ppb)
16-A49808	Cottage Grove Elementary	Sink Room C103	Faucet	29.6
16-A49832	Cottage Grove Elementary	Maintenance Tap Room D119	Spigot	95.0

ppb – parts per billion

There were no results with lead levels between 15 ppb and 20 ppb. For this range, although the EPA recommends that school drinking water not exceed 20 ppb, the MDH recommends schools seek to reduce the amount of lead in drinking water to as close to zero as possible. The next highest result for Cottage Grove Elementary was 14.2 ppb, the drinking fountain in Room C103.

The Cottage Grove Elementary kitchen steam kettle sampled on September 21, 2016 indicated a lead level at 54.4 ppb. This location was re-sampled on November 3, 2016 with a sample result of 38.0 ppb which is greater than the action level of 20 ppb. See *Table 2: Water Testing Results* for these results.

Table 2: Water Testing Results – Cottage Grove Elementary Kitchen Steam Kettle

Sample Number	Sample Date	Sampling Location	Fixture Type	Lead Results (ppb)
16-A49776	September 21, 2016	Kitchen Steam Kettle	Faucet	54.4
16-A59940	November 3, 2016	aka CGE-4 Kitchen Steam Kettle	Faucet	38.0

ppb – parts per billion

RECOMMENDATIONS

IEA recommends implementing one of the following treatment options for the fixtures with lead level exceeding the EPA action level of 20 ppb. These recommendations should also be considered for the fixtures with lead level approaching 20 ppb.

- Install a point-of-use treatment device, such as the Omnipure OMB934 1M Lead Reduction Filter.
- Conduct flush testing in accordance with EPA or MDH guidelines to determine if flushing will reduce lead levels. If results indicate that flushing will reduce lead to acceptable levels, implement a flushing program which includes documentation of daily flushing and periodic program review.
- Replace fixture with “lead free” fixture certified to NSF/ANSI 372 or NSF/ANSI 61-G. The *Reduction of Lead in Drinking Water Act* redefines “lead free” as “not more than a weighted average of 0.25% lead when used with respect to the wetted surfaces of pipes, pipe fittings, plumbing fittings, and fixtures.” Effective January 4, 2014, drinking water system components sold or installed must adhere to this new requirement.
- Remove fixture from service by disconnecting it from the water supply.
- Post signs that the water is not potable and to notify staff of this.

In addition, IEA recommends that a copy of the district's Lead- in-Drinking Water Testing Report be made available to staff and the public through the district's administrative offices.

GENERAL CONDITIONS

The analysis and opinions expressed in this report are based upon water testing at South Washington County Schools. This report does not reflect variations in conditions that may occur. Actual conditions may vary and may not become evident without further assessment.

The report is prepared for the exclusive use of our client for specific application to the project discussed and has been prepared in accordance with generally accepted environmental, health and safety practices. Other than as provided in the preceding sentence and in our Proposal #5406A dated August 5, 2016 regarding Lead-in-Water Testing, including the General Conditions attached thereto, no warranties are extended or made.

Please contact IEA if you would like assistance with any of the above recommendations or have questions regarding this report.

Sincerely,

IEA, INC.


Amy Satterfield, CPPM I
Director of Business Development


Karen Weiblen
EHS/IEQ Consultant

Enclosure

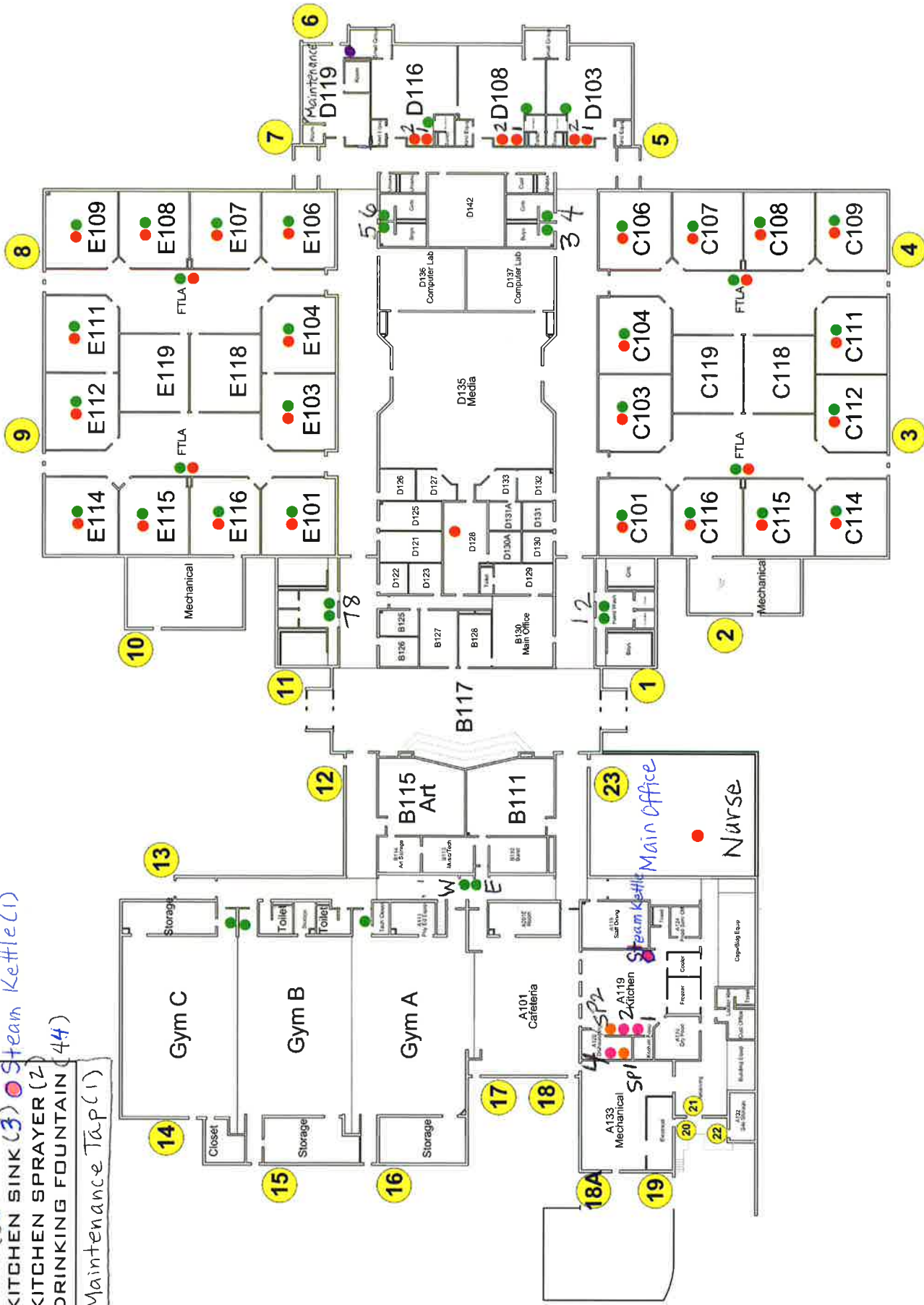
cc: Damien Nelson, Safety & Security

Appendix A

Site Map/Drawing

LEGEND

- SINK (36)
- KITCHEN SINK (3) *Steam Kettle (1)*
- KITCHEN SPRAYER (2)
- DRINKING FOUNTAIN (44)
- Maintenance Tap (1)



Appendix B

Laboratory Testing Report



MINNESOTA VALLEY TESTING LABORATORIES, INC.

1126 N. Front St. ~ New Ulm, MN 56073 ~ 800-782-3557 ~ Fax 507-359-2890
 2616 E. Broadway Ave. ~ Bismarck, ND 58501 ~ 800-279-6885 ~ Fax 701-258-9724
 1201 Lincoln Highway ~ Nevada, IA 50201 ~ 800-362-0855 ~ Fax 515-382-3885
 www.mvtl.com

MEMBER
ACIL

Report Date: 17 Oct 2016

HEIDI SOLBERG
 IEA/BROOKLYN PARK
 9201 W BDWY STE #600
 BROOKLYN PARK MN 55445

Work Order #: 12-14517
 Account #: 002190
 Purchase Order #: 201610819

Date Received: 21 Sep 2016
 Date Sampled: 21 Aug 2016
 Temperature at Receipt: 22.5C

PROJECT NAME: COTTAGE GROVE ELEM.
 PROJECT NUMBER: 201610819

LAB NUMBER	SAMPLE DESCRIPTION	LEAD RESULTS	MCL	DATE ANALYZED	ANALYST
16-A49774	09212016CGE-1 KITCHEN SINK #1	1.61 ug/L	15.0	3 Oct 16	RMB
16-A49775	09212016CGE-2 KITCHEN SINK #2	1.87 ug/L	15.0	3 Oct 16	RMB
16-A49776	09212016CGE-3 KITCHEN STEAM KETTLE	54.4 ug/L	15.0	3 Oct 16	RMB
16-A49777	09212016CGE-4 KITCHEN SINK #4	6.45 ug/L	15.0	3 Oct 16	RMB
16-A49778	09212016CGE-5 KITCHEN SPRAYER #1	2.33 ug/L	15.0	3 Oct 16	RMB
16-A49779	09212016CGE-6 KITCHEN SPRAYER #2	1.67 ug/L	15.0	3 Oct 16	RMB
16-A49780	09212016CGE-7 WEST DF NEAR RM B113	< 0.5 ug/L	15.0	3 Oct 16	RMB
16-A49781	09212016CGE-8 EAST DF NEAR RM B113	< 0.5 ug/L	15.0	3 Oct 16	RMB
16-A49782	09212016CGE-9 DF GYM A	1.21 ug/L	15.0	3 Oct 16	RMB
16-A49783	09212016CGE-10 DF GYM B	1.49 ug/L	15.0	3 Oct 16	RMB
16-A49784	09212016CGE-11 DF GYM C	< 0.5 ug/L	15.0	3 Oct 16	RMB
16-A49785	09212016CGE-12 SINK NURSES OFFICE	1.01 ug/L	15.0	3 Oct 16	RMB
16-A49786	09212016CGE-13 DF #1	0.95 ug/L	15.0	3 Oct 16	RMB

Approved by: 
 Dan O'Connell, Asst. Chemistry Laboratory Manager New Ulm, MN

Analyses performed under our Minnesota Department of Health Accreditation conform to the current TNI standards.
 The reporting limit was elevated for any analyte requiring a dilution as coded below:
 @ = Due to sample matrix # = Due to concentration of other analytes
 I = Due to sample quantity + = Due to internal standard response
 CERTIFICATION: MN LAB # 027-015-125 WI LAB # 999447680 ND MICRO # 1013-M ND WW/DW # R-040

MVTl guarantees the accuracy of the analysis done on the sample submitted for testing. It is not possible for MVTl to guarantee that a test result obtained on a particular sample will be the same on any other sample unless all conditions affecting the sample are the same, including sampling by MVTl. As a mutual protection to clients, the public and ourselves, all reports are submitted as the confidential property of clients, and authorization for publication of statements, conclusions or extracts from or regarding our reports is reserved pending our written approval.

AN EQUAL OPPORTUNITY EMPLOYER



MINNESOTA VALLEY TESTING LABORATORIES, INC.

1126 N. Front St. ~ New Ulm, MN 56073 ~ 800-782-3557 ~ Fax 507-359-2890
 2616 E. Broadway Ave. ~ Bismarck, ND 58501 ~ 800-279-6885 ~ Fax 701-258-9724
 1201 Lincoln Highway ~ Nevada, IA 50201 ~ 800-362-0855 ~ Fax 515-382-3885
 www.mvtl.com

MEMBER
ACIL

Report Date: 17 Oct 2016


HEIDI SOLBERG
 IEA/BROOKLYN PARK
 9201 W BDWY STE #600
 BROOKLYN PARK MN 55445

Work Order #: 12-14517
 Account #: 002190
 Purchase Order #: 201610819

Date Received: 21 Sep 2016
 Date Sampled: 21 Aug 2016
 Temperature at Receipt: 22.5C

PROJECT NAME: COTTAGE GROVE ELEM.
 PROJECT NUMBER: 201610819

LAB NUMBER	SAMPLE DESCRIPTION	LEAD RESULTS	MCL	DATE ANALYZED	ANALYST
16-A49787	09212016CGE-14 DF #2	6.41 ug/L	15.0	3 Oct 16	RMB
16-A49788	09212016CGE-15 DF #3	< 0.5 ug/L	15.0	3 Oct 16	RMB
16-A49789	09212016CGE-16 DF #4	< 0.5 ug/L	15.0	3 Oct 16	RMB
16-A49790	09212016CGE-17 DF #5	0.73 ug/L	15.0	3 Oct 16	RMB
16-A49791	09212016CGE-18 DF #6	< 0.5 ug/L	15.0	3 Oct 16	RMB
16-A49792	09212016CGE-19 DF #7	0.56 ug/L	15.0	3 Oct 16	RMB
16-A49793	09212016CGE-20 DF #8	< 0.5 ug/L	15.0	3 Oct 16	RMB
16-A49794	09212016CGE-21 SINK RM D128	7.08 ug/L	15.0	3 Oct 16	RMB
16-A49795	09212016CGE-22 DF RM C101	1.92 ug/L	15.0	3 Oct 16	RMB
16-A49796	09212016CGE-23 DF RM C103	14.2 ug/L	15.0	12 Oct 16	RMV
16-A49797	09212016CGE-24 DF RM C104	3.33 ug/L	15.0	3 Oct 16	RMB
16-A49798	09212016CGE-25 DF RM C106	2.34 ug/L	15.0	3 Oct 16	RMB
16-A49799	09212016CGE-26 DF RM C107	4.78 ug/L	15.0	3 Oct 16	RMB

Approved by: 
 Dan O'Connell, Asst. Chemistry Laboratory Manager New Ulm, MN
 Page: 2

Analyses performed under our Minnesota Department of Health Accreditation conform to the current TNI standards. The reporting limit was elevated for any analyte requiring a dilution as coded below:
 @ = Due to sample matrix # = Due to concentration of other analytes
 ! = Due to sample quantity + = Due to internal standard response
 CERTIFICATION: MN LAB # 027-015-125 WI LAB # 999447680 ND MICRO # 1013-M ND WW/DW # R-040



MINNESOTA VALLEY TESTING LABORATORIES, INC.

1126 N. Front St. ~ New Ulm, MN 56073 ~ 800-782-3557 ~ Fax 507-359-2890
2616 E. Broadway Ave. ~ Bismarck, ND 58501 ~ 800-279-6885 ~ Fax 701-258-9724
1201 Lincoln Highway ~ Nevada, IA 50201 ~ 800-362-0855 ~ Fax 515-382-3885
www.mvtl.com

**MEMBER
ACIL**

Report Date: 17 Oct 2016


HEIDI SOLBERG
IEA/BROOKLYN PARK
9201 W BDWY STE #600
BROOKLYN PARK MN 55445

Work Order #: 12-14517
Account #: 002190
Purchase Order #: 201610819

Date Received: 21 Sep 2016
Date Sampled: 21 Aug 2016
Temperature at Receipt: 22.5C

PROJECT NAME: COTTAGE GROVE ELEM.
PROJECT NUMBER: 201610819

LAB NUMBER	SAMPLE DESCRIPTION	LEAD RESULTS	MCL	DATE ANALYZED	ANALYST
16-A49800	09212016CGE-27 DF RM C108	5.82 ug/L	15.0	3 Oct 16	RMB
16-A49801	09212016CGE-28 DF RM C109	1.37 ug/L	15.0	3 Oct 16	RMB
16-A49802	09212016CGE-29 DF RM C111	1.09 ug/L	15.0	3 Oct 16	RMB
16-A49803	09212016CGE-30 DF RM C112	2.92 ug/L	15.0	3 Oct 16	RMB
16-A49804	09212016CGE-31 DF RM C114	0.74 ug/L	15.0	3 Oct 16	RMB
16-A49805	09212016CGE-32 DF RM C115	1.73 ug/L	15.0	3 Oct 16	RMB
16-A49806	09212016CGE-33 DF RM C116	5.39 ug/L	15.0	3 Oct 16	RMB
16-A49807	09212016CGE-34 SINK RM C101	14.1 ug/L	15.0	3 Oct 16	RMB
16-A49808	09212016CGE-35 SINK RM C103	29.6 ug/L	15.0	3 Oct 16	RMB
16-A49809	09212016CGE-36 SINK RM C104	6.59 ug/L	15.0	3 Oct 16	RMB
16-A49810	09212016CGE-37 SINK RM C106	2.76 ug/L	15.0	3 Oct 16	RMB
16-A49811	09212016CGE-38 SINK RM C107	10.8 ug/L	15.0	3 Oct 16	RMB

Approved by: 
Dan O'Connell, Asst. Chemistry Laboratory Manager New Ulm, MN
Page: 3

Analyses performed under our Minnesota Department of Health Accreditation conform to the current TNI standards. The reporting limit was elevated for any analyte requiring a dilution as coded below:
@ = Due to sample matrix # = Due to concentration of other analytes
! = Due to sample quantity + = Due to internal standard response
CERTIFICATION: MN LAB # 027-015-125 WI LAB # 999447680 ND MICRO # 1013-M ND WW/DW # R-040



MINNESOTA VALLEY TESTING LABORATORIES, INC.

1126 N. Front St. ~ New Ulm, MN 56073 ~ 800-782-3557 ~ Fax 507-359-2890
 2616 E. Broadway Ave. ~ Bismarck, ND 58501 ~ 800-279-6885 ~ Fax 701-258-9724
 1201 Lincoln Highway ~ Nevada, IA 50201 ~ 800-362-0855 ~ Fax 515-382-3885
 www.mvttl.com

MEMBER
ACIL

Report Date: 17 Oct 2016

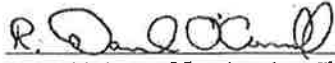
HEIDI SOLBERG
 IEA/BROOKLYN PARK
 9201 W BDWY STE #600
 BROOKLYN PARK MN 55445

Work Order #: 12-14517
 Account #: 002190
 Purchase Order #: 201610819

Date Received: 21 Sep 2016
 Date Sampled: 21 Aug 2016
 Temperature at Receipt: 22.5C

PROJECT NAME: COTTAGE GROVE ELEM.
 PROJECT NUMBER: 201610819

LAB NUMBER	SAMPLE DESCRIPTION	LEAD RESULTS	MCL	DATE ANALYZED	ANALYST
16-A49812	09212016CGE-39 SINK RM C108	1.69 ug/L	15.0	3 Oct 16	RMB
16-A49813	09212016CGE-40 SINK RM C109	5.78 ug/L	15.0	3 Oct 16	RMB
16-A49814	09212016CGE-41 SINK RM C111	6.20 ug/L	15.0	3 Oct 16	RMB
16-A49815	09212016CGE-42 SINK RM C112	3.37 ug/L	15.0	3 Oct 16	RMB
16-A49816	09212016CGE-43 SINK RM C114	4.17 ug/L	15.0	3 Oct 16	RMB
16-A49817	09212016CGE-44 SINK RM C115	6.77 ug/L	15.0	3 Oct 16	RMB
16-A49818	09212016CGE-45 SINK RM C116	12.5 ug/L	15.0	3 Oct 16	RMB
16-A49819	09212016CGE-46 DF OUTSIDE RM C116	2.60 ug/L	15.0	3 Oct 16	RMB
16-A49820	09212016CGE-47 DF OUTSIDE RM C107	1.75 ug/L	15.0	3 Oct 16	RMB
16-A49821	09212016CGE-48 SINK OUTSIDE RM C116	4.25 ug/L	15.0	3 Oct 16	RMB
16-A49822	09212016CGE-49 SK OUTSIDE RM C107	2.09 ug/L	15.0	3 Oct 16	RMB
16-A49823	09212016CGE-50 DF RM D103	0.56 ug/L	15.0	3 Oct 16	RMB
16-A49824	09212016CGE-51 DF RM D108	2.48 ug/L	15.0	3 Oct 16	RMB

Approved by: 
 Dan O'Connell, Asst. Chemistry Laboratory Manager New Ulm, MN
 Page: 4

Analyses performed under our Minnesota Department of Health Accreditation conform to the current TNI standards. The reporting limit was elevated for any analyte requiring a dilution as coded below:
 @ = Due to sample matrix # = Due to concentration of other analytes
 ! = Due to sample quantity + = Due to internal standard response
 CERTIFICATION: MN LAB # 027-015-125 WI LAB # 999447680 ND MICRO # 1013-M ND WW/DW # R-040

MVTL guarantees the accuracy of the analysis done on the sample submitted for testing. It is not possible for MVTL to guarantee that a test result obtained on a particular sample will be the same on any other sample unless all conditions affecting the sample are the same, including sampling by MVTL. As a mutual protection to clients, the public and ourselves, all reports are submitted as the confidential property of clients, and authorization for publication of statements, conclusions or extracts from or regarding our reports is reserved pending our written approval.



MINNESOTA VALLEY TESTING LABORATORIES, INC.

1126 N. Front St. ~ New Ulm, MN 56073 ~ 800-782-3557 ~ Fax 507-359-2890
 2616 E. Broadway Ave. ~ Bismarck, ND 58501 ~ 800-279-6885 ~ Fax 701-258-9724
 1201 Lincoln Highway ~ Nevada, IA 50201 ~ 800-362-0855 ~ Fax 515-382-3885
 www.mvtl.com

MEMBER
ACIL

Report Date: 17 Oct 2016

HEIDI SOLBERG
 IEA/BROOKLYN PARK
 9201 W BDWY STE #600
 BROOKLYN PARK MN 55445

Work Order #: 12-14517
 Account #: 002190
 Purchase Order #: 201610819
 Date Received: 21 Sep 2016
 Date Sampled: 21 Aug 2016
 Temperature at Receipt: 22.5C

PROJECT NAME: COTTAGE GROVE ELEM.
 PROJECT NUMBER: 201610819

LAB NUMBER	SAMPLE DESCRIPTION	LEAD RESULTS	MCL	DATE ANALYZED	ANALYST
16-A49825	09212016CGE-52 DF RM D116	0.72 ug/L	15.0	3 Oct 16	RMB
16-A49826	09212016CGE-54 SINK #1 D103	4.68 ug/L	15.0	3 Oct 16	RMB
16-A49827	09212016CGE-55 SINK #2 D103	2.50 ug/L	15.0	3 Oct 16	RMB
16-A49828	09212016CGE-56 SINK #1 D108	4.79 ug/L	15.0	3 Oct 16	RMB
16-A49829	09212016CGE-57 SINK #2 D108	0.91 ug/L	15.0	3 Oct 16	RMB
16-A49830	09212016CGE-58 SINK #1 D116	2.57 ug/L	15.0	3 Oct 16	RMB
16-A49831	09212016CGE-59 SINK #2 D116	2.32 ug/L	15.0	3 Oct 16	RMB
16-A49832	09212016CGE-60 MAINTENANCE TAP D119	95.0 -ug/L	15.0	13 Oct 16	RMV
-Sample diluted due to result above calibration or linear range.					
16-A49833	09212016CGE-62 DF E101	1.06 ug/L	15.0	3 Oct 16	RMB
16-A49834	09212016CGE-63 DF E103	5.74 ug/L	15.0	3 Oct 16	RMB
16-A49835	09212016CGE-64 DF E104	3.13 ug/L	15.0	3 Oct 16	RMB

Approved by: 
 Dan O'Connell, Asst. Chemistry Laboratory Manager New Ulm, MN
 Page: 5

Analyses performed under our Minnesota Department of Health Accreditation conform to the current TNI standards. The reporting limit was elevated for any analyte requiring a dilution as coded below:
 @ = Due to sample matrix # = Due to concentration of other analytes
 ! = Due to sample quantity + = Due to internal standard response
 CERTIFICATION: MN LAB # 027-015-125 WI LAB # 999447680 ND MICRO # 1013-M ND WW/DW # R-040

MVTL guarantees the accuracy of the analysis done on the sample submitted for testing. It is not possible for MVTL to guarantee that a test result obtained on a particular sample will be the same on any other sample unless all conditions affecting the sample are the same, including sampling by MVTL. As a mutual protection to clients, the public and ourselves, all reports are submitted as the confidential property of clients, and authorization for publication of statements, conclusions or extracts from or regarding our reports is reserved pending our written approval.



MINNESOTA VALLEY TESTING LABORATORIES, INC.

1126 N. Front St. ~ New Ulm, MN 56073 ~ 800-782-3557 ~ Fax 507-359-2890
 2616 E. Broadway Ave. ~ Bismarck, ND 58501 ~ 800-279-6885 ~ Fax 701-258-9724
 1201 Lincoln Highway ~ Nevada, IA 50201 ~ 800-362-0855 ~ Fax 515-382-3885
 www.mvtl.com

MEMBER
ACIL

Report Date: 17 Oct 2016

HEIDI SOLBERG
 IEA/BROOKLYN PARK
 9201 W BDWY STE #600
 BROOKLYN PARK MN 55445

Work Order #: 12-14517
 Account #: 002190
 Purchase Order #: 201610819

Date Received: 21 Sep 2016
 Date Sampled: 21 Aug 2016
 Temperature at Receipt: 22.5C

PROJECT NAME: COTTAGE GROVE ELEM.
 PROJECT NUMBER: 201610819

LAB NUMBER	SAMPLE DESCRIPTION	LEAD RESULTS	MCL	DATE ANALYZED	ANALYST
16-A49836	09212016CGE-65 DF E106	5.41 ug/L	15.0	3 Oct 16	RMB
16-A49837	09212016CGE-66 DF E107	1.18 ug/L	15.0	3 Oct 16	RMB
16-A49838	09212016CGE-67 DF E108	2.99 ug/L	15.0	3 Oct 16	RMB
16-A49839	09212016CGE-68 DF E109	1.47 ug/L	15.0	3 Oct 16	RMB
16-A49840	09212016CGE-69 DF E111	1.33 ug/L	15.0	3 Oct 16	RMB
16-A49841	09212016CGE-70 DF E112	1.91 ug/L	15.0	3 Oct 16	RMB
16-A49842	09212016CGE-71 DF E114	1.74 ug/L	15.0	3 Oct 16	RMB
16-A49843	09212016CGE-72 DF E115	1.45 ug/L	15.0	3 Oct 16	RMB
16-A49844	09212016CGE-73 DF E116	0.54 ug/L	15.0	3 Oct 16	RMB
16-A49845	09212016CGE-74 DF OUTSIDE E116	5.93 ug/L	15.0	3 Oct 16	RMB
16-A49846	09212016CGE-75 SINK OUTSIDE E116	2.06 ug/L	15.0	3 Oct 16	RMB
16-A49847	09212016CGE-76 DF OUTSIDE E108	3.15 ug/L	15.0	3 Oct 16	RMB
16-A49848	09212016CGE-77 SINK OUTSIDE E108	7.36 ug/L	15.0	3 Oct 16	RMB

Approved by: 
 Dan O'Connell, Asst. Chemistry Laboratory Manager New Ulm, MN
 Page: 6

Analyses performed under our Minnesota Department of Health Accreditation conform to the current TNI standards. The reporting limit was elevated for any analyte requiring a dilution as coded below:
 @ = Due to sample matrix # = Due to concentration of other analytes
 ! = Due to sample quantity + = Due to internal standard response
 CERTIFICATION: MN LAB # 027-015-125 WI LAB # 999447680 ND MICRO # 1013-M ND WW/DW # R-040

MVTL guarantees the accuracy of the analysis done on the sample submitted for testing. It is not possible for MVTL to guarantee that a test result obtained on a particular sample will be the same on any other sample unless all conditions affecting the sample are the same, including sampling by MVTL. As a mutual protection to clients, the public and ourselves, all reports are submitted as the confidential property of clients, and authorization for publication of statements, conclusions or extracts from or regarding our reports is reserved pending our written approval.



MINNESOTA VALLEY TESTING LABORATORIES, INC.

1126 N. Front St. ~ New Ulm, MN 56073 ~ 800-782-3557 ~ Fax 507-359-2890
 2616 E. Broadway Ave. ~ Bismarck, ND 58501 ~ 800-279-6885 ~ Fax 701-258-9724
 1201 Lincoln Highway ~ Nevada, IA 50201 ~ 800-362-0855 ~ Fax 515-382-3885
 www.mvtl.com

MEMBER
ACIL

Report Date: 17 Oct 2016

HEIDI SOLBERG
 IEA/BROOKLYN PARK
 9201 W BDWY STE #600
 BROOKLYN PARK MN 55445

Work Order #: 12-14517
 Account #: 002190
 Purchase Order #: 201610819

Date Received: 21 Sep 2016
 Date Sampled: 21 Aug 2016
 Temperature at Receipt: 22.5C

PROJECT NAME: COTTAGE GROVE ELEM.
 PROJECT NUMBER: 201610819

LAB NUMBER	SAMPLE DESCRIPTION	LEAD RESULTS	MCL	DATE ANALYZED	ANALYST
16-A49849	09212016CGE-78 SINK E101	3.14 ug/L	15.0	3 Oct 16	RMB
16-A49850	09212016CGE-79 SINK E103	2.42 ug/L	15.0	3 Oct 16	RMB
16-A49851	09212016CGE-80 SINK E104	4.25 ug/L	15.0	3 Oct 16	RMB
16-A49852	09212016CGE-81 SINK E106	1.64 ug/L	15.0	3 Oct 16	RMB
16-A49853	09212016CGE-82 SINK E107	2.08 ug/L	15.0	3 Oct 16	RMB
16-A49854	09212016CGE-83 SINK E108	6.05 ug/L	15.0	3 Oct 16	RMB
16-A49855	09212016CGE-84 SINK E109	3.93 ug/L	15.0	3 Oct 16	RMB
16-A49856	09212016CGE-85 SINK E111	4.94 ug/L	15.0	3 Oct 16	RMB
16-A49857	09212016CGE-86 SINK E112	4.29 ug/L	15.0	3 Oct 16	RMB
16-A49858	09212016CGE-87 SINK E114	11.8 ug/L	15.0	3 Oct 16	RMB
16-A49859	09212016CGE-88 SINK E115	5.77 ug/L	15.0	3 Oct 16	RMB
16-A49860	09212016CGE-89 SINK E116	6.47 ug/L	15.0	3 Oct 16	RMB

Approved by: 
 Dan O'Connell, Asst. Chemistry Laboratory Manager New Ulm, MN
 Page: 7

Analyses performed under our Minnesota Department of Health Accreditation conform to the current TNI standards. The reporting limit was elevated for any analyte requiring a dilution as coded below:
 @ = Due to sample matrix # = Due to concentration of other analytes
 ! = Due to sample quantity + = Due to internal standard response
 CERTIFICATION: MN LAB # 027-015-125 WI LAB # 999447680 ND MICRO # 1013-M ND WW/DW # R-040

MVTL guarantees the accuracy of the analysis done on the sample submitted for testing. It is not possible for MVTL to guarantee that a test result obtained on a particular sample will be the same on any other sample unless all conditions affecting the sample are the same, including sampling by MVTL. As a mutual protection to clients, the public and ourselves, all reports are submitted as the confidential property of clients, and authorization for publication of statements, conclusions or extracts from or regarding our reports is reserved pending our written approval.



MINNESOTA VALLEY TESTING LABORATORIES, INC.

1126 N. Front St. ~ New Ulm, MN 56073 ~ 800-782-3557 ~ Fax 507-359-2890
 2616 E. Broadway Ave. ~ Bismarck, ND 58501 ~ 800-279-6885 ~ Fax 701-258-9724
 1201 Lincoln Highway ~ Nevada, IA 50201 ~ 800-362-0855 ~ Fax 515-382-3885
 www.mvtl.com

MEMBER
ACIL

Report Date: 8 Nov 2016

HEIDI SOLBERG
 IEA/BROOKLYN PARK
 9201 W BDWY STE #600
 BROOKLYN PARK MN 55445

Work Order #: 12-16755
 Account #: 002190
 Purchase Order #: 201610819

Date Received: 3 Nov 2016
 Date Sampled: 3 Nov 2016
 Temperature at Receipt: 20.8C

PROJECT NAME: COTTAGE GROVE ELEM.

LAB NUMBER	SAMPLE DESCRIPTION	LEAD RESULTS	MCL	DATE ANALYZED	ANALYST
16-A59957	CGE-1 KITCHEN SINK MK-SK-1	2.74 ug/L	15.0	6 Nov 16	RMB
16-A59958	CGE-2 KITCHEN SINK MK-SK-2	2.55 ug/L	15.0	6 Nov 16	RMB
16-A59959	CGE-3 KITCHEN SPRAYER MK-KSP-1	1.11 ug/L	15.0	6 Nov 16	RMB
16-A59960	CGE-4 STEAM KETTLE FAUCET MK-SKF-1	38.0 ug/L	15.0	6 Nov 16	RMB
16-A59961	CGE-5 DISH ROOM SPRAYER DR-SP-1	1.44 ug/L	15.0	6 Nov 16	RMB

Approved by: 
 Dan O'Connell, Asst. Chemistry Laboratory Manager New Ulm, MN

Analyses performed under our Minnesota Department of Health Accreditation conform to the current TNI standards. The reporting limit was elevated for any analyte requiring a dilution as coded below:
 @ = Due to sample matrix # = Due to concentration of other analytes
 ! = Due to sample quantity + = Due to internal standard response
 CERTIFICATION: MN LAB # 027-015-125 WI LAB # 999447680 ND MICRO # 1013-M ND WW/DW # R-040

MVTl guarantees the accuracy of the analysis done on the sample submitted for testing. It is not possible for MVTL to guarantee that a test result obtained on a particular sample will be the same on any other sample unless all conditions affecting the sample are the same, including sampling by MVTL. As a mutual protection to clients, the public and ourselves, all reports are submitted as the confidential property of clients, and authorization for publication of statements, conclusions or extracts from or regarding our reports is reserved pending our written approval.

AN EQUAL OPPORTUNITY EMPLOYER