



---

---

## South Washington County Schools

Keith Jacobus, Ph.D., Superintendent

**District Service Center**

7362 E. Point Douglas Rd. S.

Cottage Grove, MN 55016

Phone: 651-425-6300 Fax: 651-425-6318

### **ADMINISTRATIVE REPORT**

TO: Members of the School Board  
Keith Jacobus, Superintendent

FROM: Kwame Ayim, Assistant Director of Facilities

DATE: December 6, 2019

TOPIC/PURPOSE OF REPORT: Report on Bids – 2020 Re-Roofing Projects

REFERENCE TO POLICY/STRATEGIC PLAN: Board Policy 719 – Authorization to solicit bids

RECOMMENDED BOARD ACTION: Award contracts to Berwald Roofing in the amount of \$543,700, Flynn Midwest in the amount of \$3,723,277 and Palmer West construction in the amount of \$1,515,000.

DATE FOR BOARD ACTION: January 9, 2020

### **REPORT**

A total of 6 bids were received and publicly opened on Tuesday November 26<sup>th</sup>, 2019 at 1:00pm for the complete reroofing of Woodbury Middle School, ISD 833 SWCS Community Pool (Nuevas Fronteras Pool), Hillside Elementary School and Cottage Grove Middle School. The Garland Company Inc, the project construction management firm, has reviewed the bids for compliance and recommends awards to Palmer West Construction, Rogers MN for Woodbury Middle School as the low bidder for item #1, Flynn Midwest, Plymouth, MN for Hillside Elementary as the low bidder for Item #2, Berwald Roofing, St. Paul MN for part of Hillside Elementary School as the low bidder for Item #3, Flynn Midwest, Plymouth MN for ISD 833 SWCS Community Pool as the low bidder for item #4 and Flynn Midwest, Plymouth MN for Cottage Grove Middle School as the low bidder for Item #5.

The total project award of \$5,772,977 falls within the cost estimates and budget allocation for the scope of work. A summary of the bid tabulation and the award recommendation letter from The Garland Company is attached for board members review.

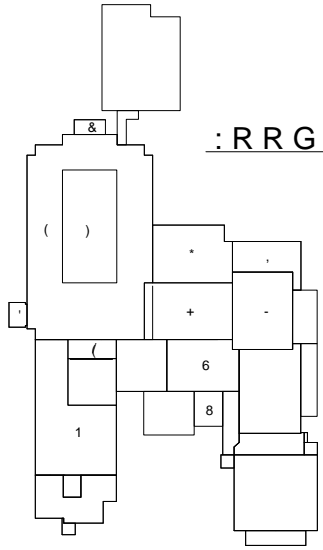




# 5 R R I 5 H S O D F H P H Q W 3 U R M H F W

3 U H E L G 0 H H W L Q J

% L G V ' X H



: R R G E X U \ 0 L G G O H 6 F K R R O

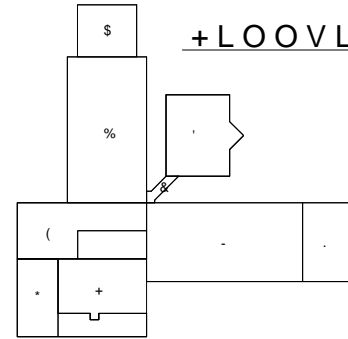
/, 1 ( , 7 ( 0

/, 1 ( , 7 ( 0

/, 1 ( , 7 ( 0

/, 1 ( , 7 ( 0

/, 1 ( , 7 ( 0



+ L O O V L G H ( O H P H Q W D U )

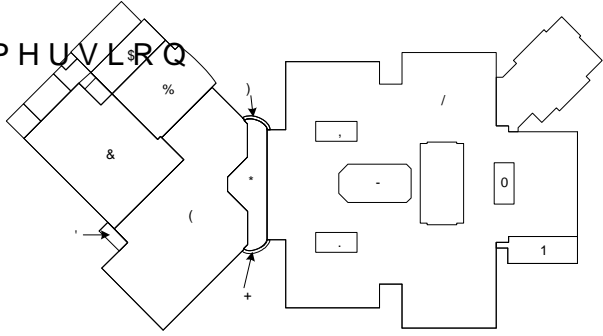
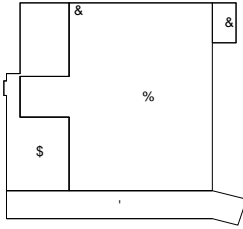
7+1, 132087, 21 82178, 1' + (61, - 8, 2)  
 \$ 35235 (755- 15785) \$ 1, 5 8880, 77)  
 \$ 231, (14) 125 88) % 7+1 8/178  
 \$ 33288, % 7+1 25, -15725, 2) 7+8  
 \* 880 (17, 2) % 7+1 881 (2) 7+108  
 \$ 880 (178, 125 81, - 27+15 352, 1878  
 \$ 880 (17, 26897, 21, 35% 887, 21)  
 \$ 880 (17, 25, - 875) 887, 21, - +2/(  
 \$ 880 (17, 21, 132087, 21, 880, 1, - 6  
 \$ 880 (17, 21, 132087, 21, 880, 1, - 6  
 \$ (08, 16 7+1 3523157+ \$ 1, 76 888, 25  
 \$ 880 (178, 125 27+108, 6 352+ % 77) 125  
 \$ 1, 881, 127 887+25, +1' % 7+1  
 25, - 187, 1' 82083+.

o  
 3, 3529 ('  
 ) Z ^  
 ^  
 ^

^ } μ s Z t • Z j v P s } v } μ v s C  
 o i o i • s % } l v s } μ P o • Z  
 } s s P ' œ } A U D E ñ i i o

& R W W D J H \* U R Y H 0 L G G O H 6 F K R R O

1 X H Y D V ) U R Q W H U D V 6 S D Q L V K , P P H U V L R Q



. 1' ( ; 2 ) ' 5 \$ : , 1 \* 6  
 \$ # R Y H U 3 D J H  
 \$ # R R G E X U \ 0 L G G O H 6 F K R R O  
 \$ # X H Y X V , P P H U V L R Q 6 F K R R O  
 \$ # L O O V L G H ( O H P H Q W D U \ 6 F K R R O  
 \$ # R W W D J H \* U R Y H 0 L G G O H 6 F K R R O  
 ' ± 0 R G L I L H G ' H W D L O V  
 ' ± 0 R G L I L H G ' H W D L O V  
 0 ± 0 H W D O ' H W D L O V

1 R W , Q & R Q W U D F W